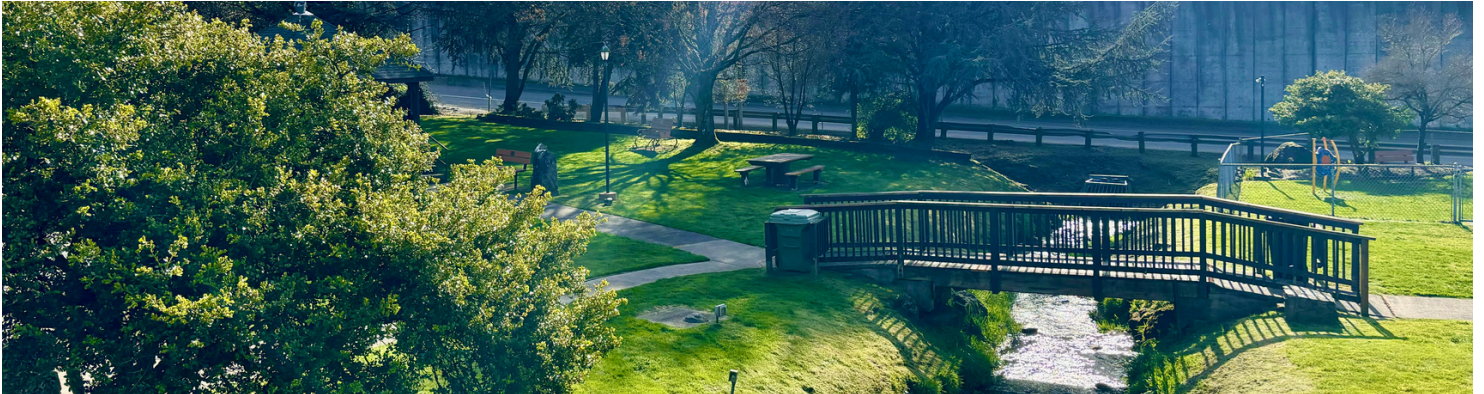




# OUR TOWN

The official newsletter of Kalama, WA



## IN THIS ISSUE

- Tax Fraud Schemes: Safeguard Your Finances this Tax Season
- Non-profit Spotlight: AMALAK
- Summer Sewer-Coming Mid-May
- Sales Tax Decrease Effective April 1st
- Sidewalk Maintenance Responsibility
- What's Happening @ the Library?
- April Parks & Recreation
- April & May Events

## Safeguard Your Finances this Tax Season

Tax season often brings a sense of urgency and stress for many individuals and businesses. Unfortunately, it also presents an opportunity for tax fraud schemes, potentially leading to financial loss and legal consequences. As we navigate through tax season, it becomes imperative to understand and recognize the most prevalent IRS tax fraud schemes to protect ourselves and our businesses.

**1. Phishing Scams:** Phishing scams involve fraudulent emails or websites that mimic legitimate IRS communications. These messages often request sensitive information such as Social Security numbers, bank account details, or passwords. The IRS will never initiate contact via email, text messages, or social media platforms, so it's crucial to be wary of unsolicited communication claiming to be from the IRS.

**2. Identity Theft:** Identity theft remains a common issue in tax fraud. Criminals steal personal information to file fraudulent tax returns or claim refunds using someone else's identity. To mitigate this risk, safeguard personal information, use strong passwords, and regularly monitor financial statements for any suspicious activity.

**3. Return Preparer Fraud:** Some tax preparers may engage in fraudulent activities such as inflating deductions or claiming false credits to boost refunds. Before hiring a tax preparer, conduct thorough research, verify credentials, and inquire about their history of complaints or disciplinary actions.

**4. Fake Charities:** Fraudulent charities often emerge during tax season, exploiting someone else's generosity for personal gain. These scams involve fake organizations claiming tax-exempt status to solicit donations. To ensure donations are legitimate and tax-deductible, research charities through reputable sources like the IRS's Tax Exempt Organization Search tool.

Story continues on Page 2...

Continued from Page 1...

As taxpayers, vigilance is our strongest defense against tax fraud. Staying informed about common schemes and exercising caution when sharing personal information or engaging with tax-related matters help to safeguard finances. Remember, if something seems “too good to be true” or if you're unsure about the legitimacy of a tax-related communication, don't hesitate to verify it directly with the IRS or seek guidance from a trusted tax professional. Let's work together to protect ourselves and our communities from tax fraud this tax season and beyond.

## Non-Profit Spotlight: AMALAK

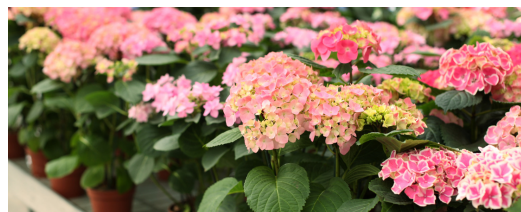
The Kalama Women's Club was organized in 1912 and became federated as GFWC Amalak in 1947. The women's club is dedicated to community service with local, national, and international projects. We meet on the 1st and 3rd Thursday of each month, Sept. through May at 1:00 pm in the Council Chambers of the Library. They would love to have you visit!



## Save the Date!

### Plant & Garden Sale:

Amalak will be selling plants, baked goods, and treasures at Haydu Expo Center on May 10th (9am-4pm) & May 11th (9am-3pm). Amalak accepts plant & treasure donations! To donate, call: 360-901-1791 (Please call on or before May 9th.)



SCAN ME

Attention residents connected to city sewer: Each year, all Kalama City residents connected to city sewer will receive “summer sewer averaging” on their utility bill for water that is used between the middle of May through the middle of September. Scan the QR code for information about summer sewer averaging. To avoid a surprise bill, we recommend that you do any heavy water consumption activities (pressure washing, filling a pool, running sprinklers, etc.) between approximately May 20th and September 20th. We will keep our website and social media pages updated as we get closer to May.

## Summer Sewer Notice

## Sales Tax Decrease- Effective April 1st

Reminder: Effective April 1, 2024, the Kalama Sales tax rate will **decrease from 8.1% to 8.0%**. due to the expiration of the county-wide “mental health tax”. To read more, visit our website here <http://tinyurl.com/4kwrztr5> Please share this info with any Kalama business owners you know so they can update their rates accordingly. Note: This change in taxes affects all cities within Cowlitz County.

## Sidewalk Maintenance Responsibility

Public works would like to take a moment to remind Kalama homeowners in City limits about their responsibility for maintaining the sidewalk near their home.

*Whenever any street, lane, square, place or alley in the city has been improved by the construction of a sidewalk or sidewalks along either or both sides thereof, the duty, burden and expense of maintenance, repair and renewal of such sidewalk or sidewalks shall devolve upon the property directly abutting upon that side of such street along which such sidewalk has been constructed as hereinafter provided.*

This is taken directly from the Kalama Municipal (KMC) Code section 11.04.010- Maintenance Responsibility. Ultimately, the maintenance of sidewalks falls to the abutting homeowners. This includes clearing snow and ice, which is why the public works crew only plows/shovels city streets and sidewalks in front of city buildings. Here is the link to the full section of KMC: <https://tinyurl.com/4wp2e9kz>



## What's Happening at the Library?

## Storytime

**THE GATHERING PLACE**  
Drop by to spend time with other seniors!  
*Chat, play cards, share recipes  
do puzzles, knit, make art.....*  
Library card not required  
**KALAMA PUBLIC LIBRARY**  
more than books!

Contact the library: **360 673 4568** or  
**[librarian@kalamalibrary.com](mailto:librarian@kalamalibrary.com)**



F.O.L.K. celebrates Mother's Day with books and baskets! Find their gift baskets at the library on Friday and Saturday, May 10th and 11th from 10am-4pm. Their books will also be sold at Haydu Park in the AMALAK Mother's Day Sale that weekend too! Thank you for supporting F.O.L.K and the Kalama Public Library.

**Did You Know?**  
more than books!  
**KALAMA PUBLIC LIBRARY**

## April Parks & Recreation

April classes with Judy Bain: Drum 4 Fun! \$5 per class- paid monthly (Tues only = \$25, Thurs only = \$20, All classes = \$45), Tuesdays & Thursdays from 10am-11am

Location: 216 Elm Street, Kalama, WA 98625

at the **Kalama Community Building**

Bring your water. Equipment is provided. Bring a check to class, or register here:

<https://www.invoicecloud.com/portal>

Need more info? Contact Emily Moore:

[communityrelations@cityofkalama.com](mailto:communityrelations@cityofkalama.com) or

**360-673-4908**



**storytime!**  
Stories  
Songs  
Rhymes  
Movement  
**FUN!**  
more than books!  
**KALAMA PUBLIC LIBRARY**

## FOLK Book & Basket Sale!

## Did You Know?

Did you know that your Kalama library card gives you access to online books and magazines? Using the Libby App, you can download over 80K e-books and 65K audio books, plus an array of informative magazines. Call the library for more information, [360-673-4568](tel:360-673-4568).



### Class

### Schedule:

- Apr. 2
- Apr. 4
- Apr. 9
- Apr. 11
- Apr. 16
- Apr. 18
- Apr. 23
- Apr. 25
- Apr. 30



# APRIL & MAY EVENTS

<b>Monday, April 1st</b>	<b>Blood Drive- Red Cross @ the Community Building (216 Elm St)</b>
<b>Saturday, May 4</b>	<b>Shirley Lowman Spring Cleanup Day! (meet @ Kalama Post Office at 9am)</b>
<b>Saturday, May 4</b>	<b>Household Hazardous Waste Collection Event (@ Kalama River Rd Park and Ride at I-5 exit 32 - more info to come on our social media pages)</b>
<b>Fri/Sat, May 10th &amp; 11th</b>	<b>Plant &amp; Garden Sale at the Haydu Expo Center (5/10 from 9am-4pm &amp; 5/11 9am-3pm)</b>
<b>Saturday, May 11th</b>	<b>Mother's Day Art in the Park hosted by KAMA (10am-4pm @ Toteff Park)</b>

## Meeting Info

- City Council : 1st & 3rd Thursdays @ 7pm
- Planning Commission: 2nd Thursday @ 6pm
- Civil Service Commission: 4th Thursday @ 5:30pm
- Library Board: 3rd Wednesday @ 5:15pm (bi-monthly beginning January 17th)
- Parks & Rec: 2nd Tuesday @ 5:30pm

Meeting Location: 320 N 1st St, Kalama, WA 98625 (and via Zoom, click [Agenda](#) for info)

## Contact Us



- Public Works 360-673-3706
  - (emergency) 360-703-0168
- Police (office) 360-673-2165
  - (emergency) 911
  - (non emergency) Cowlitz County dispatch 360-577-3098 and press 3



- City Hall 360-673-4562
- Library 360-673-4568
- Building/Planning 360-673-5211
- Utility Billing 360-673-4554
- Community Building 360-673-4908

## Helpful Contacts

- City of Kalama - Main ---- 360-673-4562
- Comcast ---- 888-226-2278
- Cowlitz County Assessor ---- 360-577-3010
- Cowlitz Bldg & Planning ---- 360-577-3052
- Cowlitz PUD ---- 360-423-2210
- Fire District #5 (office) ---- 360-673-2222
- Kalama Post Office ---- 360-673-3567
- Kalama Telephone Co. ---- 360-673-2755
- Labor & Industries (L&I) ---- 360-575-6923
- Utilities Locate ---- 800-424-5555
- Waste Control ---- 360-425-4302



We are on [Facebook](#) & [Instagram](#)!

