



Our Town

Kalama honors its legacy of community pride, rich heritage and natural beauty while embracing growth and economic prosperity.

City of Kalama

September 2022

In This Issue:

Back to School Safety Checklist

Summer Sewer Averaging Ending Soon!

Budget Time is Coming

Thank You, Voters!

Tourism Applications

Meet the Authors

Storytime Starts

All About ADU's

Library Card Sign-Up Month

BACK TO SCHOOL SAFETY CHECKLIST

As summer draws to a close and children start heading back to school, family life can get pretty hectic. It's important to remember – and share with your children – some key tips that will help keep them safe and healthy throughout the school year.

Walkers

Review your family's walking safety rules and practice walking to school with your child.

- Walk on the sidewalk, if one is available; when on a street with no sidewalk, walk facing the traffic.
- Before you cross the street, stop and look left, right and left again to see if cars are coming.
- Make eye contact with drivers before crossing and always cross streets at crosswalks or intersections.
- Stay alert and avoid distracted walking.

Bus Riders

Teach your children school bus safety rules and practice with them.

- Go to the bus stop with your child to teach them the proper way to get on and off the bus.
- Teach your children to stand 6 feet (or three giant steps) away from the curb.
- If your child must cross the street in front of the bus, teach him or her to walk on the side of the road until they are 10 feet ahead of the bus; your child and the bus driver should always be able to see each other.



Bike Riders

Teach your child the rules of the road and practice riding the bike route to school with your child.

- Ride on the right side of the road, with traffic, and in a single file.
- Come to a complete stop before crossing the street; walk bikes across the street.
- Stay alert and avoid distracted riding.
- Make sure your child always wears a properly fitted helmet and bright clothing

Driving Your Child to School

Stay alert and avoid distracted driving.

- Obey school zone speed limits and follow your school's drop-off procedure.
- Make eye contact with children who are crossing the street.
- Never pass a bus loading or unloading children.
- The area 10 feet around a school bus is the most dangerous for children; stop far enough back to allow them to safely enter and exit the bus.

Teen Drivers

Car crashes are the No. 1 cause of death for teens. Fortunately, there is something we can do.

- Teens crash because they are inexperienced; practice with new drivers every week, before and after they get their license.
- Set a good example; drive the way you want your teen to drive.

Upcoming Events

Contact Us EMERGENCY/AFTER HOURS

Police – 911

Public Works
360-703-0168 or
911

CITY HALL HOURS-
Monday-Friday:
9AM-5PM

Utility Billing-
Payments
360- 673-4554

Permitting,
Building, & Planning
360-673-5211

Finance – Accounts
Payable
360-673- 4555

Clerk/Treasurer
360-673-4561

City Administrator
360-673-3265

Kalama Police Office
360-673-2165
Hours M-F 9am-
4:30pm

Kalama Public Works
360-673-3706

Kalama Library
360-673-4568
Current Hours of Op:
Mon- Fri 12pm-5pm,
Saturdays 9am-2pm

Kalama Community
Building (call City
Hall)
360-673-4908

SUMMER SEWER AVERAGING ENDING SOON



For all Kalama water users connected to sewer: the summer sewer average **will END in the middle of September (the September meter reading is scheduled for the 19th)**. After the September meter reading, sewer will be billed according to your exact water consumption. (Please note- every drop of water will have a sewer charge associated with it.) For questions regarding utility billing, contact (360) 673-4554.

MARK YOUR CALENDARS: IT'S BUDGET TIME AGAIN

The City Council will be looking at the needs of Kalama as it sets the budget for 2023. Attend the meetings to contribute to the conversations and learn how taxes and rates are set and how your tax dollars are spent! Projected hearing dates are:

- Revenue Hearing: 10/20/2022
- Budget Hearings: 11/3/2022 & 11/17/2022

THANK YOU, VOTERS!

Thank you, voters, for approving the sales tax increase for the Transportation Benefit District (TBD) and funding streets!



TOURISM \$\$\$: 2023 EVENTS

The Tourism Advisory Committee will be accepting applications from September 1st-30th (deadline is 9/30 @ 5pm) for 2023 events. Submit your completed applications to apclerk@cityofkalama.com. You can also drop them off at City Hall or mail them to PO Box 1007, Kalama, WA 98625. Call 360-673-4908 for more information.

"MEET THE AUTHORS"

The Kalama Public Library will host a group of 20 authors for a full day event that has something to offer everyone. Kicking off the day is a special Storytime with Ruthie plus three picture book authors. A panel of young adult authors willing to dish about their own cringy teen secrets, and a panel of local authors who write for adults will round out the day. Books will be available for purchase and there will be time to meet the authors and have your books signed.

WHEN: Saturday, October 8th @ Storytime (Panels and Meet the Authors, 3 p.m. to 6 p.m.)
WHERE: Kalama Community Building

STORYTIME STARTS: SEPTEMBER 7TH

Storytime is a kid-sized adventure for children through age 5 that lasts throughout the school year. It's a reading readiness program with stories, songs, rhymes, and movement provided by the Kalama Public Library. Join us on the **1st and 3rd Wednesdays of each month!** Time: Wednesdays from 10:30am-11:15am (see www.kalamalibrary.com for location).

Thank you, Kalama, for a wonderful summer! Here are a few images from the busy summer months!





LIKE US ON FACEBOOK
www.cityofkalama.com

Police Website
www.kalamapolice.com

Library Website
www.kalamalibrary.com

CITY ADMINISTRATOR'S UPDATE: ADU'S

What is an Accessory Dwelling Unit (ADU)? Can I add one on my property?

Definition: An accessory dwelling unit (ADU) is a smaller, independent residential dwelling unit located on the same lot as a stand-alone (i.e., detached) single-family home.

Sometimes these units are detached like a back house or "mother-in-law" cottage. Sometimes they are an attic or basement suite with a separate exterior entrance (see graphic). The current Kalama Municipal Code does not allow for ADUs on lots smaller than 3 acres.

Why would the City of Kalama Allow ADU's?

The current philosophy is ADU's help to meet the need for affordable housing by creating additional independent living spaces in existing neighborhoods. Generally, the ADU is smaller than the primary residence and provides additional living space on the property. This is a popular type of infill or way to increase the density of an existing neighborhood (more people living per acre of property). The cost of these ADU's should be cheaper to construct than new, single-family developments by eliminating the fixed costs of real estate in conjunction with creating more residential units. Lower overall costs generally translate to lower rents and more affordable housing options.

Where do I get more information about this topic in Kalama?

The Planning Commission is going to consider ADU's at their monthly meetings for the next 5 months. Starting September 20, 2022 @ 6pm, the first discussion will be: A definition specifically for Kalama's land use code; which zones will be eligible; what type of primary land use will be eligible; number of ADU's on a site; and finally, lot size and qualifications. Successive meetings will address topics about Building Design, Site Design, Use (rental, Air B&B, etc.) and Parking/Infrastructure impacts.

How do I make sure my concerns are heard?

The final meeting in the series will be a Public Hearing where the Planning Commission will take testimony from anyone who wishes to share in person at the meeting, or written testimony can be submitted any time.

We encourage the public to attend the meetings, or if people have specific questions, please contact Adam or Cris at city hall. We are happy to help you submit your comments or questions to the Planning Commission. We look forward to hearing from you,

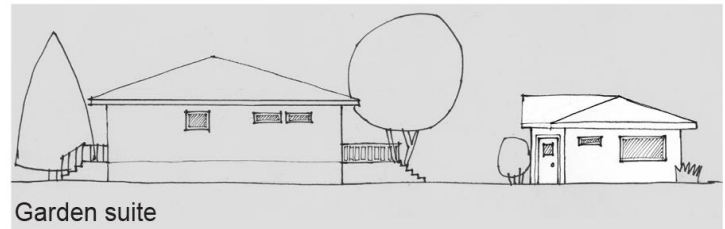
Adam Smee
City Administrator



Basement suite



Second floor suite



Garden suite



Garage suite (above)



Garage suite (adjacent)

September is Library Card Sign-Up Month

Let your imagination sing at the library.



LIBRARY CARD SIGN-UP

September is “library card sign-up month”! Kalama City residents pay for a library card via their taxes; non-City residents pay \$40.00 annually. Visit the library or our website to sign up: [Click Here.](#)



September 1 st & 8 th (1 st 11am-3pm, 8 th 4pm-7pm)	Downtown Farmer’s Market (September 1 st & 8 th)
September 5 th	City offices and Library Closed – Labor Day
September 7 th & 21 st	Storytime! (See www.kalamalibrary.com for location, 10:30am-11:15am)
October 4 th	National Night Out (downtown)

For detailed event information, please see the City’s Facebook Page, the Kalama Chamber of Commerce website at www.kalamachamber.com/events-1, the City website at www.cityofkalama.com, the Kalama Fair website at www.kalamafair.com, or the Port of Kalama’s website at www.portofkalama.com.

<p>WHEN DO WE MEET?</p> <p><u>Kalama City Council</u> 1st and 3rd Thursdays @ 7:00 p.m.</p> <p><u>Kalama Planning Commission</u> 2nd Thursday @ 6:00 p.m.</p> <p><u>Civil Service Commission</u> 4th Thursday @ 5:30 p.m. – As needed</p> <p><u>Kalama Library Board</u> Bi-monthly beginning in January on the 19th Wednesday @ 5:15 p.m.</p> <p><u>MEETING LOCATION</u> *Hybrid meetings; physical location: 320 N 1st St, Kalama</p>	<p>POLICE OR FIRE EMERGENCIES – CALL 911</p> <p>PUBLIC WORKS - AFTER-HOURS EMERGENCY NUMBER (360) 703-0168 – OR CALL 911</p> <p>Kalama Police Office Non-Emergency..... (360)-673-2165 Kalama City Offices..... (360)-673-4562 City of Kalama Fax..... (360) 673-4560 Comcast..... (888) 226-2278 Cowlitz County Assessor..... (360) 577-3010 Cowlitz County Bldg. & Planning..... (360) 577-3052 Cowlitz Public Utilities District..... (360) 423-2210 Fire District #5 Office Non-Emergency.....(360) 673-2222 Kalama Post Office..... (360) 673-3567 Kalama Telephone Company..... (360) 673-2755 Labor & Industries..... (360) 575-6923 Utilities Locate (Call Before You Dig!) 811 or (800) 424-5555 Waste Control..... (360) 425-4302</p>
---	--

ENROLL IN PAPERLESS BILLING. ONLINE BILL PAY AVAILABLE – ALSO AUTOPAY

Pay online 24/7 at www.cityofkalama.com

