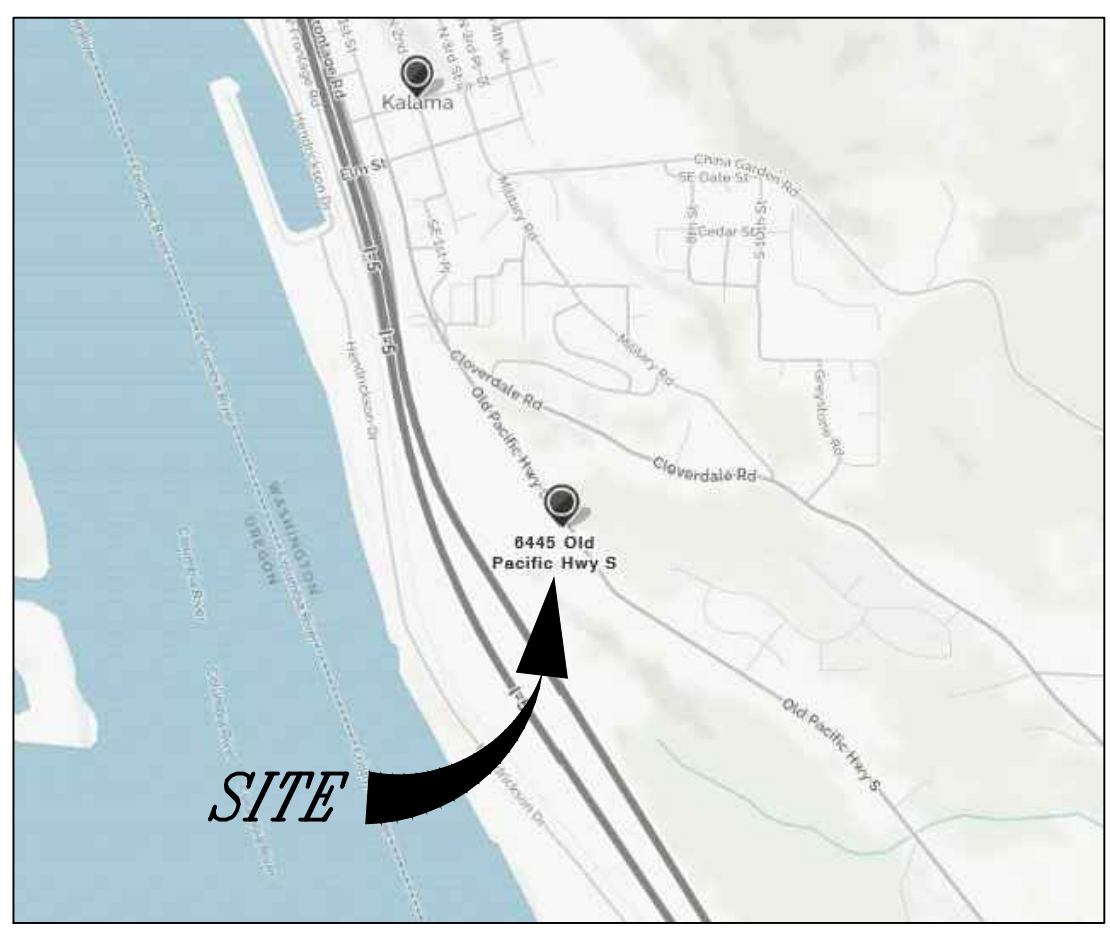
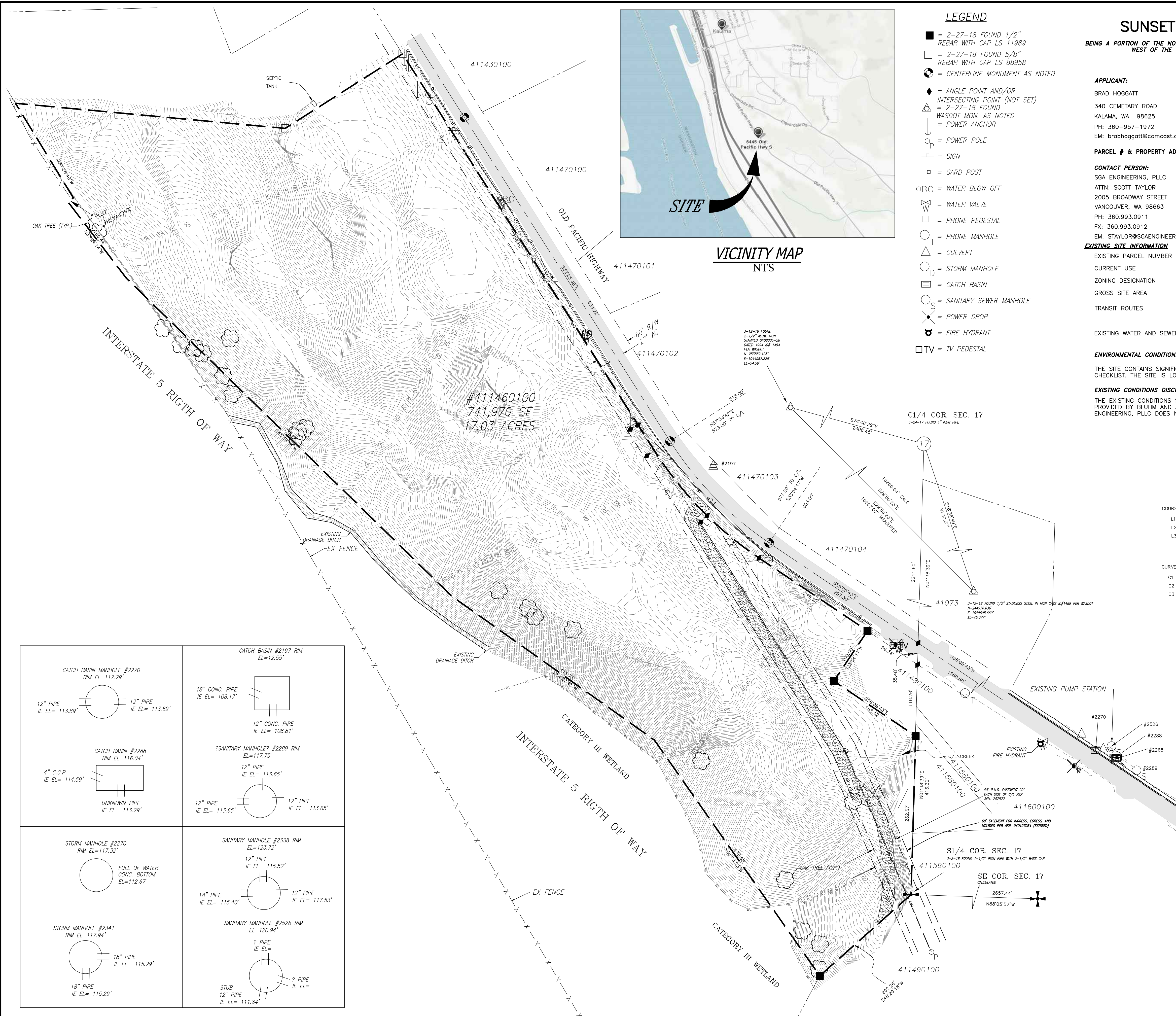


© SGA ENGINEERING, PLLC - DATE PLOTTED: Oct. 15, 2018 - 12:04 PM SGA DRAWING FILE: W:\DWG\1795 - SUNSET TERRACE\DRAWINGS\2-PRELIM SHEET SET\EXISTING CONDITIONS.DWG



VICINITY MAP
NTS

LEGEND

- = 2-27-18 FOUND 1/2" REBAR WITH CAP LS 11989
- = 2-27-18 FOUND 5/8" REBAR WITH CAP LS 88958
- = CENTERLINE MONUMENT AS NOTED
- ◆ = ANGLE POINT AND/OR INTERSECTING POINT (NOT SET)
- △ = 2-27-18 FOUND WADOT MON. AS NOTED
- ⌋ = POWER ANCHOR
- ⌋-P = POWER POLE
- ⌋-S = SIGN
- = GARD POST
- B = WATER BLOW OFF
- ⊗ = WATER VALVE
- T = PHONE PEDESTAL
- T = PHONE MANHOLE
- △ = CULVERT
- D = STORM MANHOLE
- ⊞ = CATCH BASIN
- S = SANITARY SEWER MANHOLE
- ⌋-S = POWER DROP
- ⌋-H = FIRE HYDRANT
- TV = TV PEDESTAL

SUNSET TERRACE SUBDIVISION

BEING A PORTION OF THE NORTHWEST QUARTER OF SECTION 17, TOWNSHIP 6 NORTH, RANGE 1 WEST OF THE WILLAMETTE MERIDIAN CLARK COUNTY, WASHINGTON

PRELIMINARY APPLICATION
JULY 2018

APPLICANT:
BRAD HOGGATT
340 CEMETARY ROAD
KALAMA, WA 98625
PH: 360-957-1972
EM: brabhoggatt@comcast.com

PROPERTY OWNER:
SUNSET TERRACE LLC
PO BOX 128
KALAMA, WA 98625

PARCEL # & PROPERTY ADDRESS:
411460100
6445 OLD PACIFIC HWY

CONTACT PERSON:
SGA ENGINEERING, PLLC
ATTN: SCOTT TAYLOR
2005 BROADWAY STREET
VANCOUVER, WA 98663
PH: 360.993.0911
FX: 360.993.0912
EM: STAYLOR@SGAENGINEERING.COM

EXISTING SITE INFORMATION

EXISTING PARCEL NUMBER	411460100
CURRENT USE	VACANT LAND
ZONING DESIGNATION	R-3
GROSS SITE AREA	17.03 ACRES 741,970 S.F.
TRANSIT ROUTES	NO KNOWN BUS ROUTES WITHIN 1 MILE OF THE SITE.

EXISTING WATER AND SEWER
SEWER SERVICE WILL BE PROVIDED BY CITY OF KALAMA. PUBLIC WATER SERVICE WILL BE PROVIDED BY CITY OF KALAMA. NO SEPTIC SYSTEMS ARE KNOWN TO EXIST ON SITE. NO WELLS ARE KNOWN TO EXIST ON-SITE.

ENVIRONMENTAL CONDITIONS

THE SITE CONTAINS SIGNIFICANT ENVIRONMENTAL CONDITIONS LISTED IN THE APPLICATION CHECKLIST. THE SITE IS LOCATED IN THE COLUMBIA RIVER WATERSHED.

EXISTING CONDITIONS DISCLAIMER

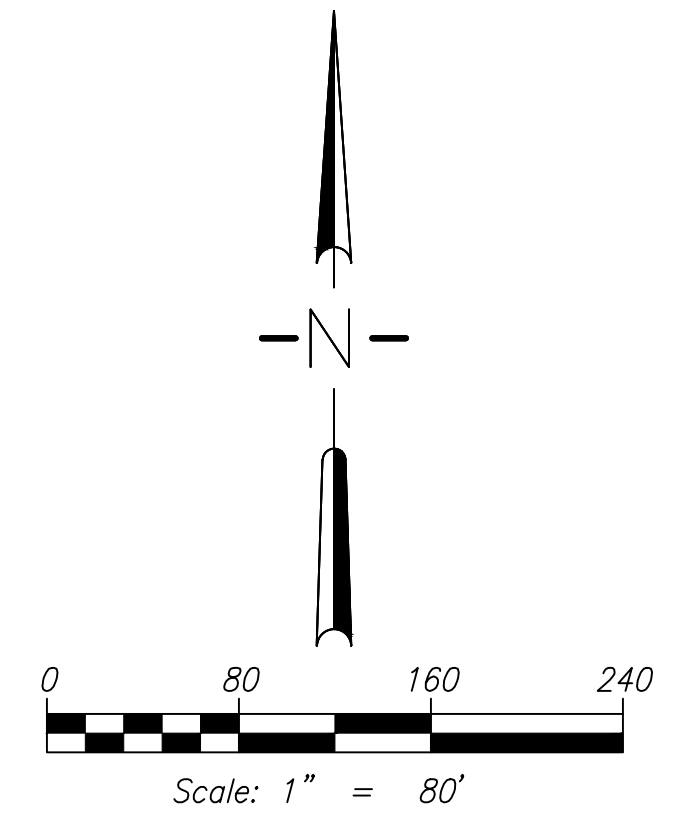
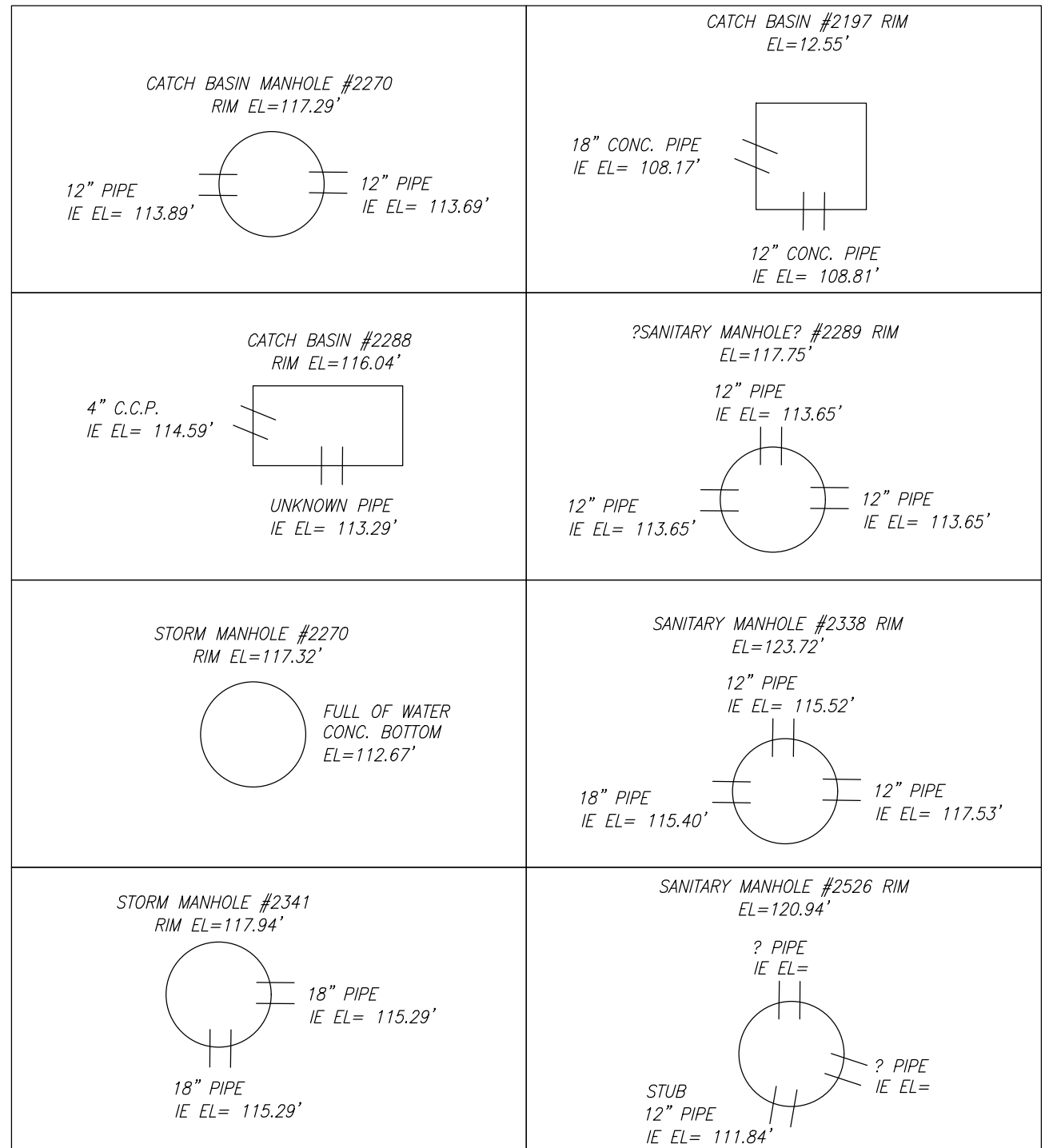
THE EXISTING CONDITIONS SHOWN ON THIS PLAN WERE OBTAINED FROM INFORMATION PROVIDED BY BLUHM AND ASSOCIATES LAND SURVEYORS, INC. AND PUBLIC SOURCES. SGA ENGINEERING, PLLC DOES NOT GUARANTEE THE ACCURACY OF THIS INFORMATION.

LINE CALL TABLE

COURSE	BEARING	DISTANCE
L1	S44°26'31"W	15.00'
L2	N32°25'18"W	51.44'
L3	N57°34'42"E	15.00'

CURVE TABLE

CURVE	RADIUS	LENGTH	DELTA
C1	573.00'	236.75'	23°40'25"
C2	603.00'	110.90'	10°32'14"
C3	618.00'	141.69'	13°08'11"





CIVIL ENGINEERING ~ LAND PLANNING
DEVELOPMENT SERVICES
LANDSCAPE ARCHITECTURE

2005 BROADWAY
VANCOUVER, WA 98663
PHONE (360)993-0911
FAX (360)993-0912

SUNSET TERRACE
SUBDIVISION

EXISTING CONDITIONS

PRELIMINARY

REVISIONS

DESIGNED BY:	SAT,SEM
DRAWN BY:	SAT,SEM
CHECKED BY:	JTM
SCALE:	1" = 80'

JOB NUMBER 1795	SHEET PRE1.0
--------------------	-----------------

© SCA ENGINEERING, PLLC - DATE PLOTTED: Oct. 15, 2018 - 12:08 PM SCA DRAWING FILE: W:\DWG\1795 - SUNSET TERRACE\DRAWINGS\2-PRELIM SHEET SET\PRELIMINARY GRADING PLAN.DWG



N

Scale: 1" = 50'

SCA ENGINEERING & DESIGN
 CIVIL ENGINEERING ~ LAND PLANNING
 DEVELOPMENT SERVICES
 LANDSCAPE ARCHITECTURE

2005 BROADWAY
 VANCOUVER, WA 98663
 PHONE (360)993-0911
 FAX (360)993-0912



PRELIMINARY GRADING PLAN - SHEET 1

SUNSET TERRACE SUBDIVISION

WASHINGTON
CITY OF KALAMA

PRELIMINARY
REVISIONS

DESIGNED BY: SAT,SEM
 DRAWN BY: SAT,SEM
 CHECKED BY: JTM
 SCALE: 1" = 50'

JOB NUMBER: 1795 SHEET: PRE4.0

