

Architecture - Interiors
Planning - Engineering

Portland, OR
503.224.9560
Vancouver, WA
360.695.7879
Seattle, WA
206.749.9993

www.mcknze.com

MACKENZIE
DESIGN DRIVEN | CLIENT FOCUSED

Client

CITY OF KALAMA
195 N. FIRST STREET
KALAMA, WA 98625

Project

KALAMA POLICE
DEPARTMENT
FRONTAGE
ROAD N. KALAMA
WA 98625

© MACKENZIE 2017
ALL RIGHTS RESERVED
THESE DRAWINGS ARE THE PROPERTY
OF MACKENZIE AND ARE NOT TO BE
USED OR REPRODUCED IN ANY MANNER,
WITHOUT PRIOR WRITTEN PERMISSION

REVISIONS:

REVISION	DELTA	REVISION	DELTA	CLOSING DATE

SHEET TITLE:
SITE PLAN

DRAWN BY: CTL, CME

CHECKED BY: RLF

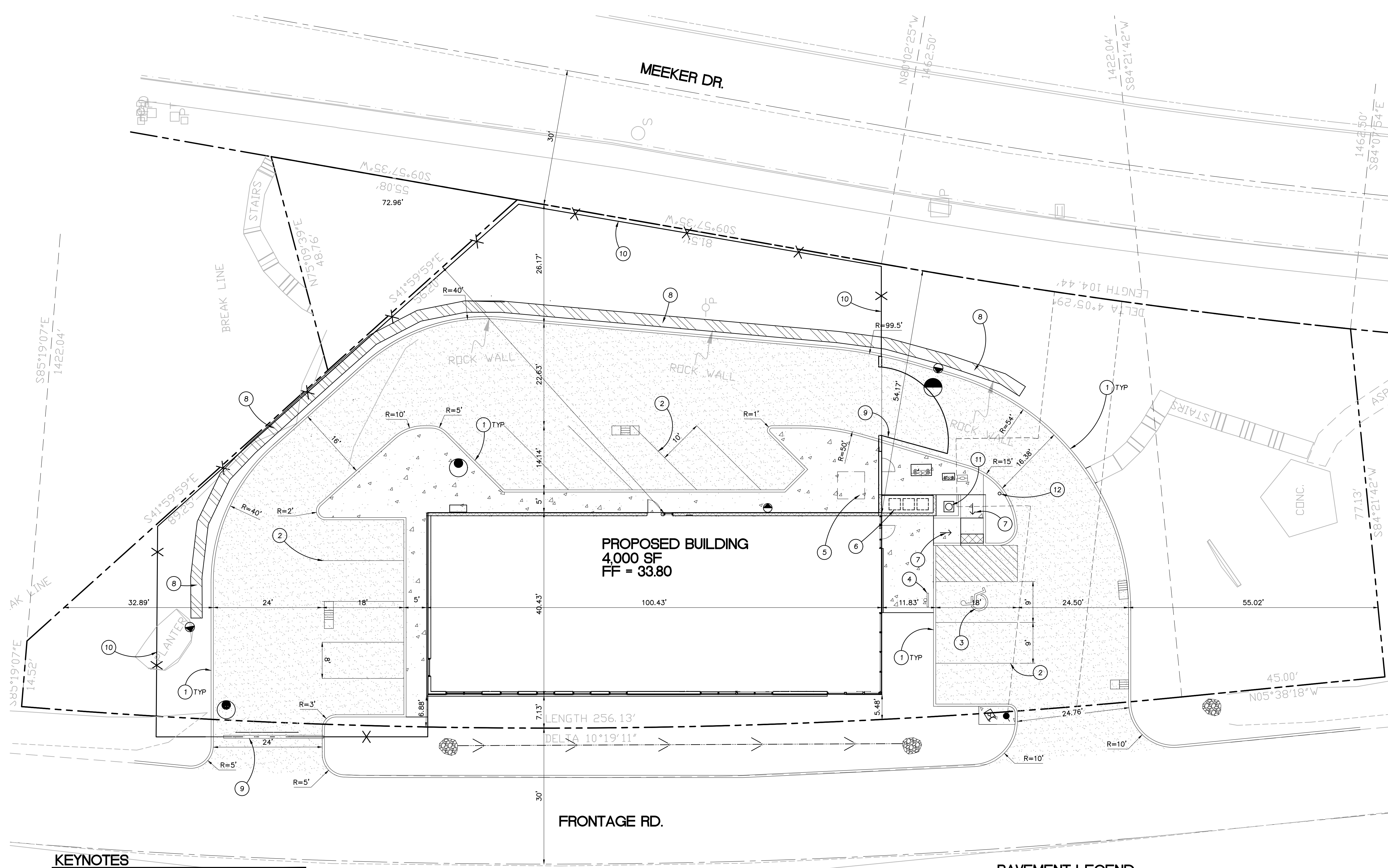
SHEET:

C1.10

JOB NO.
2160247.00

100% COST ESTIMATE SET

09/13/17



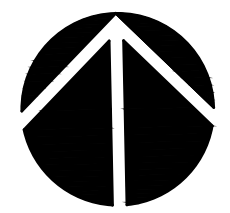
PROPOSED BUILDING
4,000 SF
FF = 33.80

FRONTAGE RD.

MEEKER DR.

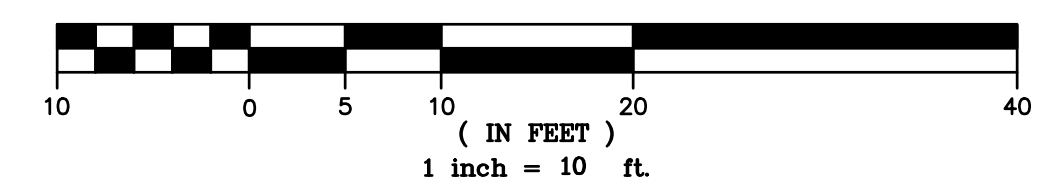
KEYNOTES

- 1. VERTICAL CURB - SEE 1/C5.10
- 2. 4" PARKING STRIPE
- 3. ADA SYMBOL - SEE 7/C5.10
- 4. ADA SIGN - SEE 6/C5.10
- 5. TRANSFORMER PAD - SEE ELECTRICAL PLANS
- 6. TRASH ENCLOSURE - SEE ARCHITECTURAL PLANS
- 7. ADA RAMP - SEE 5/C5.10
- 8. PROPOSED ROCK RETAINING WALL, DESIGN BY OTHERS
- 9. AUTOMATIC SECURITY GATE
- 10. SECURITY FENCE
- 11. FLAG POLE - SEE ARCHITECTURAL PLANS
- 12. GATE ENTRY PEDESTAL



1
C1.10

SITE PLAN



PAVEMENT LEGEND

PAVING SECTION:
3" AC OVER 6" CRUSHED SURFACING BASE COURSE
- SEE PROPOSED KALAMA POLICE STATION REPORT
BY PANGELO INCORPORATED

100% COST ESTIMATE SET

09/13/17