

COLUMBIA POINTE

Located In The S.W. 1/4 Of Section 8, T. 6 N., R. 1 E., W.M.

SITE



12 P

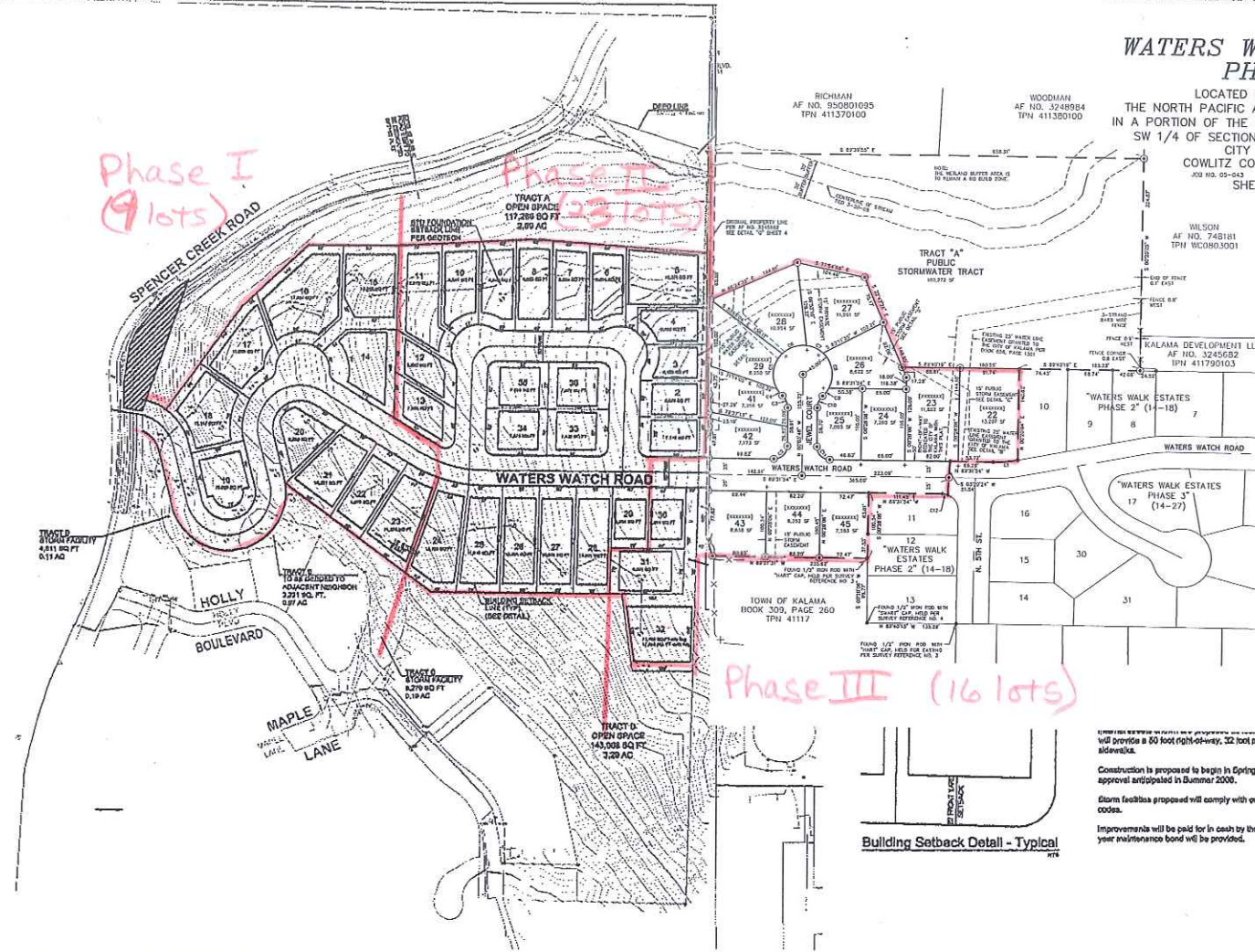
WATERS WALK ESTATES PHASE 4

LOCATED IN A PORTION OF
THE NORTH PACIFIC ADDITION TO KALAMA (3-58)
IN A PORTION OF THE NW 1/4 AND NE 1/4,
SW 1/4 OF SECTION 8, T. 6 N., R. 1 W., W.M.,
CITY OF KALAMA,
COWLITZ COUNTY, WASHINGTON
JOB NO. 03-043 DRAWING DATE 03/25/2003
SHEET 3 OF 4

Phase I
(9 lots)

Phase II
(25 lots)

Phase III
(16 lots)



- LEGEND
- INDICATES 1/2" x 24" IRON ROD WITH FLEETER #10(2) CAP FOUND AND HELD PER SURVEY REFERENCES 10.6 AND 9, UNLESS NOTED OTHERWISE.
 - INDICATES 1/2" x 24" IRON ROD WITH FLEETER #10(2) CAP SET.
 - ROCK NAILS WITH BRASS WASHER INScribed AND BEARS ARE SET AT THE INTERSECTION OF ALL LOT LINES IN THE CURVE FOR THE PURPOSE OF THE LOT DISTANCE.
 - TPN INDICATES TAX PARCEL NUMBER.

ADJUSTED CURVE TABLE

| STATION | CHORD BEARING | CHORD DISTANCE | ARC DISTANCE | CHORD BEARING | CHORD DISTANCE | ARC DISTANCE |
|---------|-----------------|----------------|--------------|-----------------|----------------|--------------|
| 1 | N 89° 59' 54" E | 100.00 | 100.00 | S 89° 59' 54" W | 100.00 | 100.00 |
| 2 | N 89° 59' 54" E | 100.00 | 100.00 | S 89° 59' 54" W | 100.00 | 100.00 |
| 3 | N 89° 59' 54" E | 100.00 | 100.00 | S 89° 59' 54" W | 100.00 | 100.00 |
| 4 | N 89° 59' 54" E | 100.00 | 100.00 | S 89° 59' 54" W | 100.00 | 100.00 |
| 5 | N 89° 59' 54" E | 100.00 | 100.00 | S 89° 59' 54" W | 100.00 | 100.00 |
| 6 | N 89° 59' 54" E | 100.00 | 100.00 | S 89° 59' 54" W | 100.00 | 100.00 |
| 7 | N 89° 59' 54" E | 100.00 | 100.00 | S 89° 59' 54" W | 100.00 | 100.00 |
| 8 | N 89° 59' 54" E | 100.00 | 100.00 | S 89° 59' 54" W | 100.00 | 100.00 |
| 9 | N 89° 59' 54" E | 100.00 | 100.00 | S 89° 59' 54" W | 100.00 | 100.00 |
| 10 | N 89° 59' 54" E | 100.00 | 100.00 | S 89° 59' 54" W | 100.00 | 100.00 |
| 11 | N 89° 59' 54" E | 100.00 | 100.00 | S 89° 59' 54" W | 100.00 | 100.00 |
| 12 | N 89° 59' 54" E | 100.00 | 100.00 | S 89° 59' 54" W | 100.00 | 100.00 |
| 13 | N 89° 59' 54" E | 100.00 | 100.00 | S 89° 59' 54" W | 100.00 | 100.00 |
| 14 | N 89° 59' 54" E | 100.00 | 100.00 | S 89° 59' 54" W | 100.00 | 100.00 |
| 15 | N 89° 59' 54" E | 100.00 | 100.00 | S 89° 59' 54" W | 100.00 | 100.00 |
| 16 | N 89° 59' 54" E | 100.00 | 100.00 | S 89° 59' 54" W | 100.00 | 100.00 |
| 17 | N 89° 59' 54" E | 100.00 | 100.00 | S 89° 59' 54" W | 100.00 | 100.00 |
| 18 | N 89° 59' 54" E | 100.00 | 100.00 | S 89° 59' 54" W | 100.00 | 100.00 |
| 19 | N 89° 59' 54" E | 100.00 | 100.00 | S 89° 59' 54" W | 100.00 | 100.00 |
| 20 | N 89° 59' 54" E | 100.00 | 100.00 | S 89° 59' 54" W | 100.00 | 100.00 |
| 21 | N 89° 59' 54" E | 100.00 | 100.00 | S 89° 59' 54" W | 100.00 | 100.00 |
| 22 | N 89° 59' 54" E | 100.00 | 100.00 | S 89° 59' 54" W | 100.00 | 100.00 |
| 23 | N 89° 59' 54" E | 100.00 | 100.00 | S 89° 59' 54" W | 100.00 | 100.00 |
| 24 | N 89° 59' 54" E | 100.00 | 100.00 | S 89° 59' 54" W | 100.00 | 100.00 |
| 25 | N 89° 59' 54" E | 100.00 | 100.00 | S 89° 59' 54" W | 100.00 | 100.00 |
| 26 | N 89° 59' 54" E | 100.00 | 100.00 | S 89° 59' 54" W | 100.00 | 100.00 |
| 27 | N 89° 59' 54" E | 100.00 | 100.00 | S 89° 59' 54" W | 100.00 | 100.00 |
| 28 | N 89° 59' 54" E | 100.00 | 100.00 | S 89° 59' 54" W | 100.00 | 100.00 |
| 29 | N 89° 59' 54" E | 100.00 | 100.00 | S 89° 59' 54" W | 100.00 | 100.00 |
| 30 | N 89° 59' 54" E | 100.00 | 100.00 | S 89° 59' 54" W | 100.00 | 100.00 |
| 31 | N 89° 59' 54" E | 100.00 | 100.00 | S 89° 59' 54" W | 100.00 | 100.00 |
| 32 | N 89° 59' 54" E | 100.00 | 100.00 | S 89° 59' 54" W | 100.00 | 100.00 |
| 33 | N 89° 59' 54" E | 100.00 | 100.00 | S 89° 59' 54" W | 100.00 | 100.00 |
| 34 | N 89° 59' 54" E | 100.00 | 100.00 | S 89° 59' 54" W | 100.00 | 100.00 |
| 35 | N 89° 59' 54" E | 100.00 | 100.00 | S 89° 59' 54" W | 100.00 | 100.00 |
| 36 | N 89° 59' 54" E | 100.00 | 100.00 | S 89° 59' 54" W | 100.00 | 100.00 |
| 37 | N 89° 59' 54" E | 100.00 | 100.00 | S 89° 59' 54" W | 100.00 | 100.00 |
| 38 | N 89° 59' 54" E | 100.00 | 100.00 | S 89° 59' 54" W | 100.00 | 100.00 |
| 39 | N 89° 59' 54" E | 100.00 | 100.00 | S 89° 59' 54" W | 100.00 | 100.00 |
| 40 | N 89° 59' 54" E | 100.00 | 100.00 | S 89° 59' 54" W | 100.00 | 100.00 |
| 41 | N 89° 59' 54" E | 100.00 | 100.00 | S 89° 59' 54" W | 100.00 | 100.00 |
| 42 | N 89° 59' 54" E | 100.00 | 100.00 | S 89° 59' 54" W | 100.00 | 100.00 |
| 43 | N 89° 59' 54" E | 100.00 | 100.00 | S 89° 59' 54" W | 100.00 | 100.00 |
| 44 | N 89° 59' 54" E | 100.00 | 100.00 | S 89° 59' 54" W | 100.00 | 100.00 |
| 45 | N 89° 59' 54" E | 100.00 | 100.00 | S 89° 59' 54" W | 100.00 | 100.00 |
| 46 | N 89° 59' 54" E | 100.00 | 100.00 | S 89° 59' 54" W | 100.00 | 100.00 |
| 47 | N 89° 59' 54" E | 100.00 | 100.00 | S 89° 59' 54" W | 100.00 | 100.00 |
| 48 | N 89° 59' 54" E | 100.00 | 100.00 | S 89° 59' 54" W | 100.00 | 100.00 |
| 49 | N 89° 59' 54" E | 100.00 | 100.00 | S 89° 59' 54" W | 100.00 | 100.00 |
| 50 | N 89° 59' 54" E | 100.00 | 100.00 | S 89° 59' 54" W | 100.00 | 100.00 |
| 51 | N 89° 59' 54" E | 100.00 | 100.00 | S 89° 59' 54" W | 100.00 | 100.00 |
| 52 | N 89° 59' 54" E | 100.00 | 100.00 | S 89° 59' 54" W | 100.00 | 100.00 |
| 53 | N 89° 59' 54" E | 100.00 | 100.00 | S 89° 59' 54" W | 100.00 | 100.00 |
| 54 | N 89° 59' 54" E | 100.00 | 100.00 | S 89° 59' 54" W | 100.00 | 100.00 |
| 55 | N 89° 59' 54" E | 100.00 | 100.00 | S 89° 59' 54" W | 100.00 | 100.00 |
| 56 | N 89° 59' 54" E | 100.00 | 100.00 | S 89° 59' 54" W | 100.00 | 100.00 |
| 57 | N 89° 59' 54" E | 100.00 | 100.00 | S 89° 59' 54" W | 100.00 | 100.00 |
| 58 | N 89° 59' 54" E | 100.00 | 100.00 | S 89° 59' 54" W | 100.00 | 100.00 |
| 59 | N 89° 59' 54" E | 100.00 | 100.00 | S 89° 59' 54" W | 100.00 | 100.00 |
| 60 | N 89° 59' 54" E | 100.00 | 100.00 | S 89° 59' 54" W | 100.00 | 100.00 |



SCALE 1 INCH = 60 FEET

Construction is proposed to begin in Spring 2006 with final plat approval anticipated in Summer 2006.
Storm facilities proposed will comply with current City of Kalama codes.
Improvements will be paid for in cash by the developer and a two year maintenance bond will be provided.

Building Setback Detail - Typical

| | | |
|-----------------|-----------|--------|
| PRELIM | CC | A SUBD |
| DESIGNED BY | KSB | |
| DRAWN BY | CHANG | |
| CHECKED BY | CHANG | |
| SCALE: | 18" X 24" | |
| NO. SHEETS | 3 | |
| NO. SHEETS USED | 3 | |
| SHEET | 3 | |
| 1 | | |
| 2 | | |

E:\projects\03-043\03-043.dwg 1/25/03 2:45:04 PM PL 3