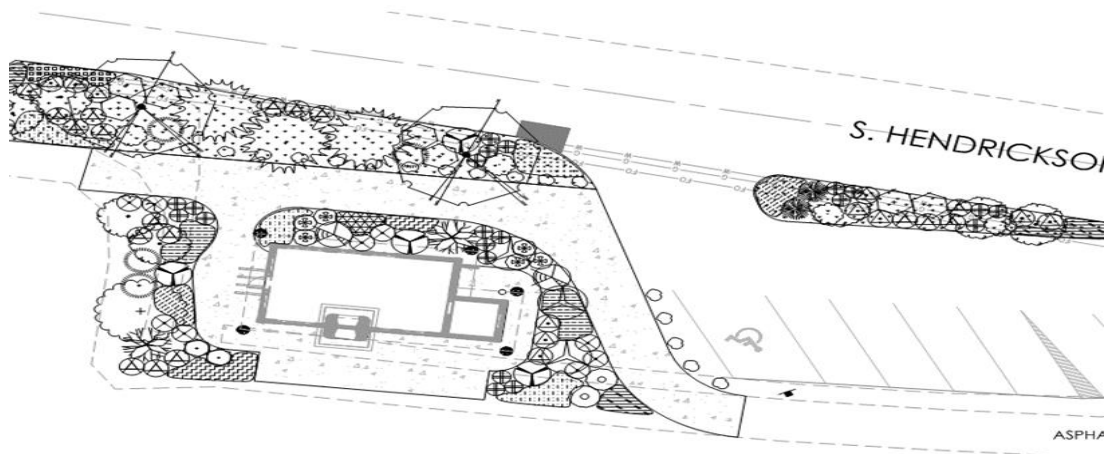


Kalama City Council Public Hearing Port of Kalama Substantial Shoreline Permit

The Kalama City Council will hold Public hearing for the Port of Kalama Ahles Point Shoreline Substantial Development Permit on May 3, 2017 @ 7pm in the Kalama Community Building at 216 Elm Street. Proposed improvements include an approximately 770 SF concession building, 1,200 SF restroom and 600 SF picnic shelter. The public is invited and encouraged to attend.



AHLES POINT PUB PLANTING PLAN

SCALE: 1" = 20'